

G15-44A

TELEHANDLER

JLG
reachingout®



Performance

Rated Capacity	15,000 lb	6,804 kg
Maximum Lift Height	44 ft	13.41 m
Load at Max Height	7,000 lb	3,175 kg
Maximum Forward Reach	31 ft	9.45 m
Load at Max Reach	2,000 lb	907 kg
Frame Leveling	10°	
Lift Speed (boom retracted)		
Up	16 sec	
Down	15 sec	
Boom Speed		
Extended	17 sec	
Retracted	13 sec	
Top Travel Speed (4-Speed)	20 mph	32 kph
Drawbar Pull (loaded)	24,000 lb	10,886 kg
Outside Turning Radius	14.5 ft	4.41 m
Operating Weight	32,500 lb	14,742 kg

Standard Specifications

Engine

Make and Model	Cummins QSB4.5L ATAAC Tier 4 Interim	
No. of Cylinders	4	
Displacement	276 cu in.	4.5 L
Gross Power Basic	130 hp	97 kW
Maximum Torque @ 1500 rpm	457 lb-ft	619 Nm
Fuel Tank Capacity	38 gal	144 L

Transmission

Powershift
4-speed forward and 3-speed reverse.

Axles

Trunnion mounted planetary 45° steer axles.
Integral steer cylinder.
High bias limited slip differential on front axle.

Brakes

Service brakes are inboard wet disc brake on front and rear axles.
Parking brakes are wet disc spring-applied hydraulic release on front axle.

Tires

Standard	17.5 x 25
Optional	Foam-Filled

Cab

Certified ROPS/FOPS structure
Adjustable seat
Horn

Steering 4-Wheel

Hydraulic power steering with manual backup.
Operator selectable 4-wheel circle, 4-wheel crab, 2-wheel front.

Instruments

Volt meter	Temperature gauge
Hourmeter	Fuel gauge
Engine oil pressure gauge	

Hydraulic System-Implement

Capacity	60 gal	227.1 L
Load sense piston pump.		
Auxiliary hydraulics used for all attachments equipped with cylinders or other hydraulic components.		

Accessories & Options

- Enclosed Cab
- Auxiliary Electrics
- Road Lights
- Air Conditioning
- Work Lights
- Rotating Beacon
- Pintle Hook
- Fenders
- Brick Guard
- Arctic Package
- Hydraulic Coupler
- Reverse Sensing System
- Skylight Wiper

Attachments

Standard Carriage	60 in., 15,000 Capacity	1.5 m
	72 in., 15,000 Capacity	1.8 m
Side-Tilt Carriage	72 in., 10,000 Capacity	1.8 m
Swing 90° Carriage	72 in., 10,000 Capacity	1.8 m
Dual Fork Positioning Carriage	50 in., 10,000 Capacity	1.3 m
Side-Shift Carriage	50 in., 15,000 Capacity	1.3 m
Pallet Forks	2.36 x 6 x 48 in., 15,000 lb Capacity	60 mm x 152 mm x 1.2 m
Lumber Forks	2.36 x 6 x 60 in., 15,000 lb Capacity	60 mm x 152 mm x 1.5 m
	2.36 x 6 x 72 in., 15,000 lb Capacity	60 mm x 152 mm x 1.8 m
Fork Extensions	90 in.	2.3 m
Light Material Bucket	72 in., 1.0 cu yd, 2,940 lb Capacity	1.8 m, 0.76 m³
	96 in., 1.5 cu yd, 4,410 lb Capacity	2.4 m, 1.15 m³
	102 in., 2.0 cu yd, 5,885 lb Capacity	2.6 m, 1.53 m³
Grapple Bucket	96 in., 1.75 cu yd, 6,000 lb Capacity	2.4 m, 1.34 m³
Pipe Grapple	72 in., 6,000 lb Capacity	1.8 m, 2,722 kg
Truss Boom	12 ft, 2,000 lb Capacity	3.7 m, 907 kg
	15 ft, 2,000 lb Capacity	4.6 m, 907 kg
	12 ft with winch, 2,000 lb Capacity	3.7 m, 907 kg
Fork Mounted Work Platform	8 ft, 1,000 lb Capacity	2.4 m, 455 kg Capacity
Lifting Hooks		
Fork Mounted	15,000 lb Capacity	6,804 kg Capacity
Coupler Mounted	15,000 lb Capacity	6,804 kg Capacity

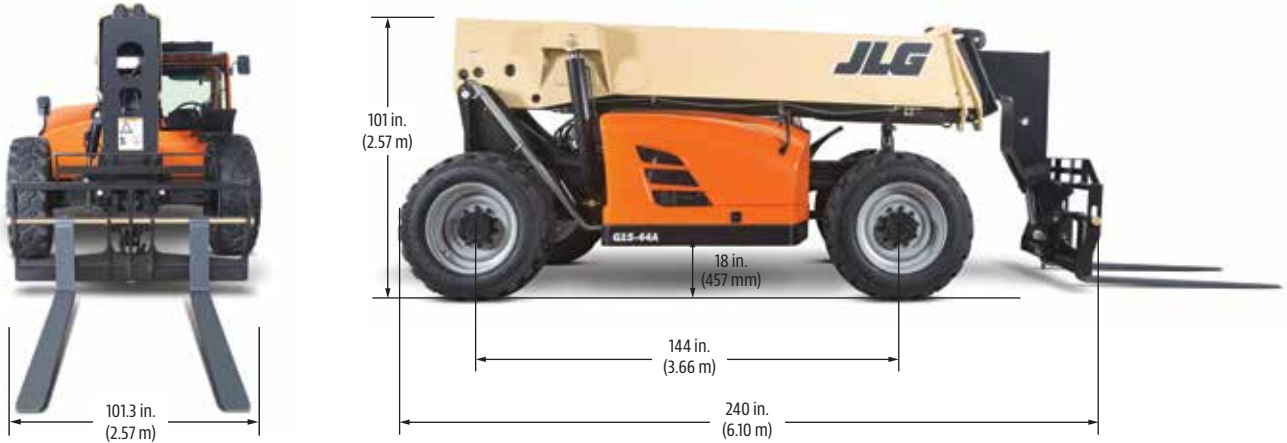
G15-44A

TELEHANDLER

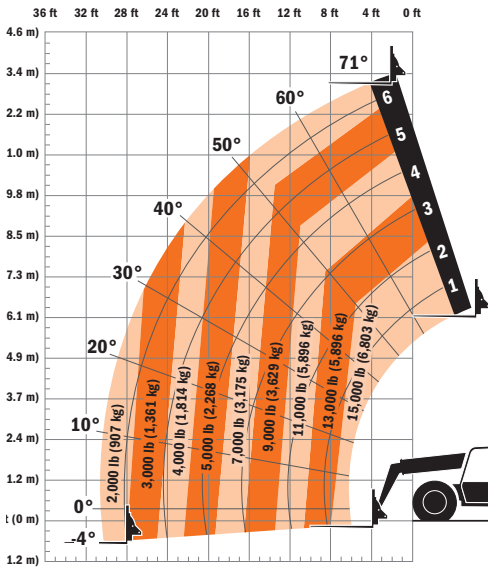


Dimensions

All dimensions are approximate.



Load Chart



The JLG "1 & 5" Warranty

JLG Industries, Inc. backs its products with its exclusive "1 & 5" Warranty. We provide coverage on all products for one (1) full year, and cover all specified major structural components for five (5) years. Due to continuous product improvements, we reserve the right to make specification and/or equipment changes without prior notification. This machine meets or exceeds applicable OSHA Regulations in 29 CFR 1910.67, 29 CFR 1926.453, ANSI A92.5-2006, and CSA Standard CAN3-B354.2-M82, as originally manufactured for intended applications.

Part No.: 3132239
R0215
Printed in USA



JLG Industries, Inc.

1 JLG Drive
McConnellsburg, PA 17233-9533
Telephone 717-485-5161
Toll-free in US 877-JLG-LIFT
Fax 717-485-6417
www.jlg.com

An Oshkosh Corporation Company