

MORBARK® 50/48B NCL WHOLE TREE CHIPPER



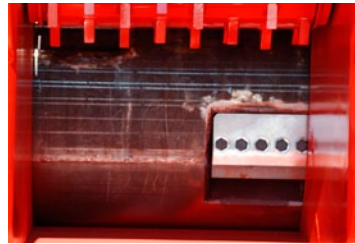
BENEFITS

- Morbark's proven drum design with a staggered-knife pattern and optional Babbitt-style knives make the machine more versatile.
- Morbark's internal drive feed system has fewer moving parts, creating a high-performance, low-maintenance machine.
- Morbark Integrated Control Systems allows for diagnostic monitoring to reduce down time.
- Direct flow discharge chute allows you to fill trucks denser, creating additional tons per load.
- Like all Morbark equipment, the 50/48B is a long-lasting, durable machine backed by a world-class parts and service support team.



Morbark Integrated Control Systems (MICS)

This ultimate diagnostic system monitors hydraulic pressures, temperatures, clutch systems and engine efficiency to maximize performance.



Drum

The Advantage 3™ drum creates more uniform chips and reduces operating and maintenance costs.



Hydraulic Stabilizers

With the optional rear stabilizers all four stabilizers provide a solid stance during chipping operations.



Infeed System

Aggressive live floor and large top feedwheel ensure positive feed of brushy tops and limbs.

SPECIFICATIONS

SPECIFICATIONS MAY VARY WITH EQUIPMENT OPTIONS 6/6/12

General

Length 41'2"
 Height 12'8"
 Width 10'1"
 Gross weight 63,460
 Tongue weight 27,800
 Axle weight 35,660
 Tandem-axle trailer... 44,000 lbs. suspension
 Tires 425/65R/22.5 20-ply
 Brakes air
 Towing arrangement fifth wheel
 Chipping capacity 27"
 Engine CAT
 Horsepower 800 HP to 1050 HP
 Fuel capacity (tank) 400 gallons
 Hydraulic oil capacity 285 gallons
 Yoke Inclinometer

Infeed System

Infeed opening 52" x 45"
 Infeed System consists of one 34" diameter top compression feed roll with internal drive and a 50" wide x 14' long live floor equipped with four strands of WDH-120 chain in a staggered configuration.

Chipper Assembly

Drum diameter 48"
 Drum width 55 1/2"
 Chipper knives (10) 11" x 7 3/16" x 3/4" thick
 Counter knives (10) 11" x 6 3/8" x 1/2" thick
 Knives and Counter knives are Babbitt-style and made of A-8 modified steel
 Drum speed 945 RPM
 Feed drive hydraulic

Discharge System

Straight discharge chute, including hydraulically operated chip deflect with vertical and horizontal adjustment, clean-out door and an additional 18" top section.

Remote

Wireless remote control with a 60' tethered remote back-up system for chipper operation. Functions include forward/reverse of feed works, up and down of top feed roll, operation of chip discharge chute and throttle.

Options

Automatic reversing fan system
 Rear hydraulic stabilizers
 Light package
 ESPAR heating system for cold-weather start
 11 HP air compressor with lockable enclosure



MORBARK®
 BUILDING EQUIPMENT THAT CREATES OPPORTUNITIES

800.831.0042
 989.866.2381
www.morbark.com

PO Box 1000
 8507 S. Winn Rd.
 Winn, MI 48896