

A large orange Hitachi excavator is shown in a construction setting. The excavator's boom is raised high, and its bucket is positioned near a concrete structure. The machine is equipped with a long-reach boom and a large bucket. The background features a blue sky with scattered white clouds and some greenery. The excavator's body is primarily orange with black accents on the tracks and cab. The word "HITACHI" is prominently displayed on the boom and the side of the machine's body. The overall scene conveys a sense of power and industrial capability.

# HITACHI

**ZX345USLC-6**

**ULTRASHORT EXCAVATORS**





# PERFECTLY PACKAGED PRODUCTION

Whether it's road building or work in congested quarters, the ZX345USLC-6 packs all the power you need into its reduced-tail-swing design. The largest of our ultrashort excavators, this model features fuel efficiency; a comfortable, full-size cab; a hefty undercarriage; increased versatility and simplified maintenance that keeps you running longer.

When you choose the ZX345USLC-6,



**NOTHING  
IS STOPPING YOU.**



ZX345USLC-6

ON.

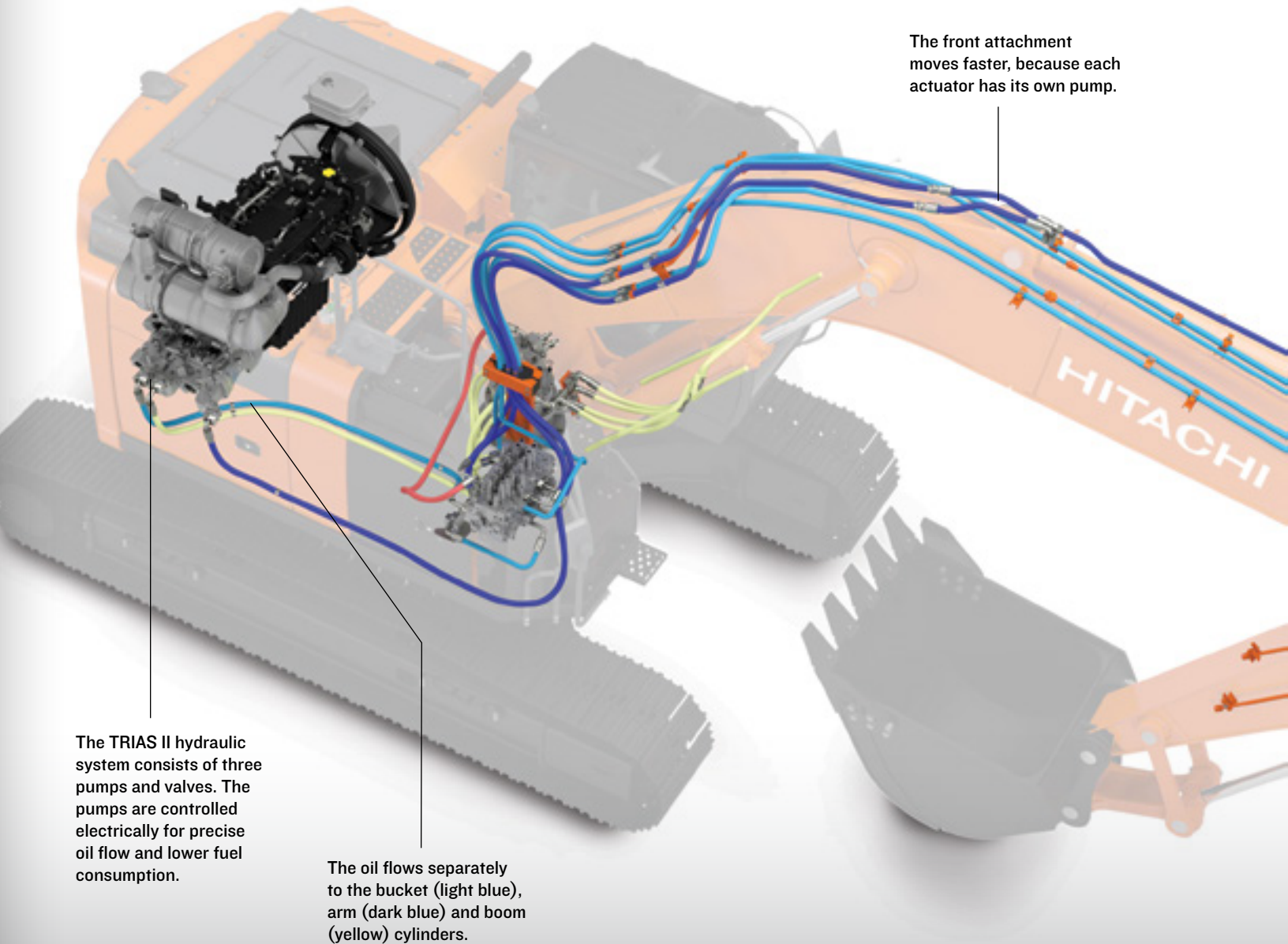




### THREE-PUMP HYDRAULIC SYSTEM

Our TRIAS II three-pump hydraulic system maximizes multifunction operation and delivers the fastest cycle times in the industry.

When demanded, the third pump supplies additional hydraulic oil to the swing circuit without stealing oil and speed from other functions. This hydraulic system enables an operator to maximize productivity without sacrificing fuel economy.



### EFFICIENT FUEL SYSTEM

The pressurized fuel system improves fuel injector operation, and the fuel recirculation system helps prevent fuel gelling in cold climates – so you can maintain maximum productivity.

### AUXILIARY HYDRAULIC LINES

Optional auxiliary hydraulic lines and proportional reliefs allow in-monitor flow and pressure adjustments, and can help improve productivity on the jobsite.

### POWER BOOST

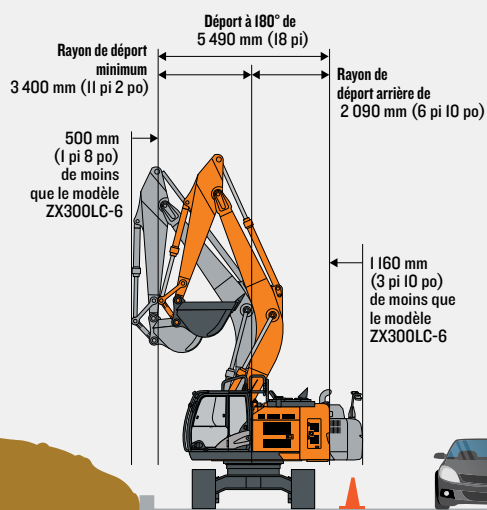
Muscle through tough-digging by pressing the power-boost button.

# POWERFUL PERFORMANCE ON ANY JOB.

Work where others can't with the powerful and easy-to-maneuver ZX345USLC-6. This workhorse is equipped with our exclusive TRIAS II three-pump hydraulic system that provides the fastest cycle times in the industry.

The ZX345USLC-6 also provides fuel-efficient performance with three work modes. Economy (ECO) maximizes fuel efficiency while delivering an enhanced level of productivity. Power (PWR) delivers a balance of power and speed, plus fuel economy for normal operation. High Productivity (H/P) delivers more power and faster hydraulic response.

Work anywhere,  
 **ANYTIME.**



## TIGHT TAIL SWING

Nothing is stopping you – or traffic – with the ZX345USLC-6 on road projects. A tight-tail-swing radius leaves a small footprint for quick work and allows lanes to stay open.

# SMALL FOOTPRINT. FULL-SIZE CAB.

It's true. A comfortable operator is more productive. And the ZX345USLC-6 features a full-size cab with a standard, air-suspension heated seat; silicone-filled cab mounts to isolate noise and vibration; an LCD monitor; auxiliary function lever and more.

The ZX345USLC-6 keeps operators  
■ **COMFORTABLE  
ON THE JOBSITE.**



#### MULTIFUNCTION LCD MONITOR

Multi-language LCD monitor and rotary dial provide easy access to machine info and functions. Turn and tap to select work modes, monitor maintenance intervals, check diagnostic codes and set cab temperature.



#### ALL-AROUND VISIBILITY

Get unobstructed all-around visibility thanks to a wide expanse of front, side and overhead glass and mirrors, plus a standard rearview camera.



#### SMOOTH OPERATION

Ergonomically correct short-throw pilot levers provide smooth operation, giving you full command from your fingertips. A standard auxiliary function lever with sliding switch on the right hand pilot joystick provides easy and precise control of attachments.







#### **EXTRA ILLUMINATION**

Optional cab and right-side boom lights provide extra illumination to extend your production.

#### **FULL-SIZE CAB**

The ZX345USLC-6 is one of the only reduced-tail-swing models in the industry that features a full-size cab. Operators get maximum support from a standard, air-suspension heated seat.

#### **CLIMATE CONTROL**

Automatic, high-velocity bi-level climate-control system with automotive-style adjustable louvers helps keep the glass clear, the cab comfortable and the operator productive.





#### **FT4 TECHNOLOGY – NO DPF**

Our FT4 field-proven technology is simple and efficient, employing cooled exhaust gas recirculation (EGR), a diesel oxidation catalyst (DOC) and selective catalytic reduction (SCR). An improved piston design allows particulate matter to be burned in cylinder, so there's no need for a diesel particulate filter (DPF).

#### **EXTENDED SERVICE INTERVALS**

Oil-impregnated bushings enhance durability and extend lube intervals.

#### **PROTECTED JOINTS**

Tungsten-carbide-coated surfaces protect the critical bucket-to-arm joint.

#### **ROCK-SOLID FRAME**

Thick-plate single-sheet mainframe, box-section track frames and industry exclusive double-seal swing bearing deliver rock-solid durability.



# BUILT TO TACKLE THE TOUGHEST JOBS.

The ZX345USLC-6 has the power and toughness you need on all types of jobs, especially those in tight quarters. Designed for a 35-metric-ton machine, the heavy-duty undercarriage provides greater stability, increased lift capacity and a lower center of gravity.

The boom, arm and mainframe are so durable, they're warranted for three years or 10,000 hours, whichever comes first.

The ZX345USLC-6 gives you  
■ **RELIABLE STRENGTH.**



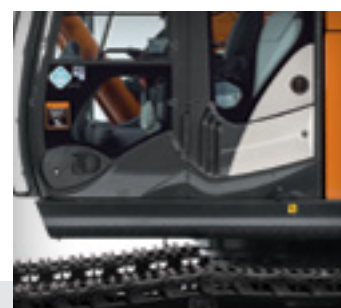
## HEAVY-DUTY UNDERCARRIAGE

The hefty undercarriage, designed for a 35-metric-ton machine, provides greater stability, increased lift capacity and a lower center of gravity.



## LONG-TERM DURABILITY

With large idlers, rollers and struted track links, the sealed and lubricated undercarriage is built for the long haul.



## REINFORCED SIDE FRAMES

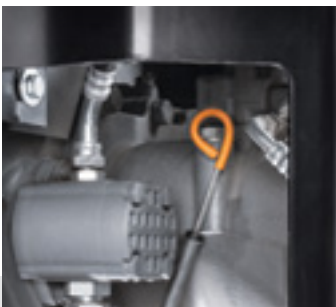
Reinforced D-channel side frames provide maximum cab and component protection.



# MINIMIZE MAINTENANCE. MAXIMIZE UPTIME.

Maintenance is minimized with the ZX345USLC-6 – from grouped service points to at-a-glance gauges. No diesel particulate filter (DPF) is needed with the FT4 engine solution, so regenerations won't stop your work. Extended service intervals help maximize uptime. And scheduled maintenance is easy to track using ZXLink™ and the in-cab diagnostic monitor.

It all adds up to  
■ **LOWER OPERATING COSTS.**



#### EASY CHECKS

Easy-to-reach dipstick and see-through coolant reservoir make daily checks and/or additions quick and easy.



#### MONITOR LEVELS

Easy-to-navigate LCD monitor tracks various fluid levels and issues scheduled maintenance alerts and diagnostic information.

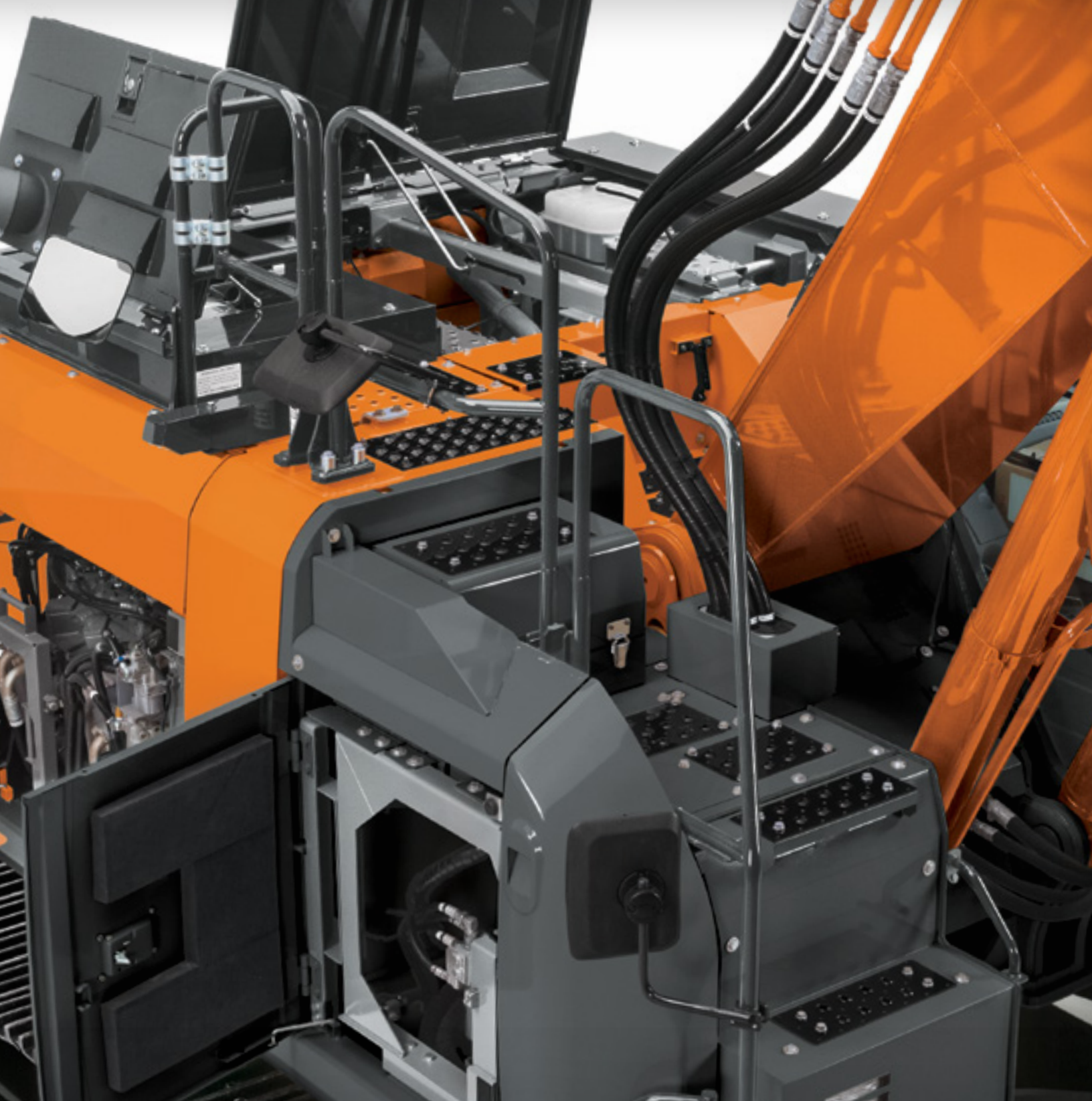


#### GROUPED SERVICE POINTS

Engine oil, fuel and hydraulic pilot oil filters are all located on the same side at ground level for easy servicing.







#### **GROUND-LEVEL ACCESS**

Ground-level-accessible coolers with easily removed pre-cleaner screens help prevent trash from plugging up the cores – helping maintain cool-running efficiency.

#### **NO DPF NEEDED**

The FT4 engine solution does not require a DPF, saving service time and lowering operating costs.

#### **AUTOMATIC EFFICIENCY**

Auto-idle, which reduces engine speed when hydraulics aren't in use, and auto-shutdown contribute to fuel efficiency.

#### **BATTERY DISCONNECT**

A battery disconnect switch, located in the rear door behind the cab, is easily accessible and extends battery life.



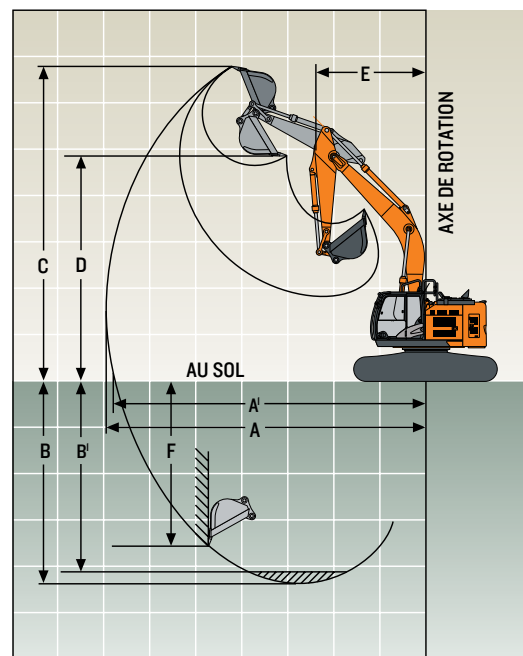
## SPECIFICATIONS

### ZX345USLC-6

Engine		ZX345USLC-6	
Manufacturer and Model		Isuzu 6HK1	
Non-Road Emissions Standard		EPA Final Tier 4 (FT4)/EU Stage IV	
Net Rated Power (ISO 9249)		186 kW (249 hp) at 1,900 rpm	
Cylinders		6	
Displacement		7.79 L (475 cu. in.)	
Off Level Capacity		70% (35 deg.)	
Aspiration		Turbocharged, air-to-air charge air cooler	
Cooling			
Cool-on-demand hydraulic-driven, suction-type fan with remote-mounted drive and enclosed fan guard; side-by-side-by-side radiator, oil cooler, and intercooler with dust net			
Powertrain			
2-speed propel with automatic shift			
Maximum Travel Speed			
Low		2.6 km/h (1.6 mph)	
High		4.1 km/h (2.5 mph)	
Drawbar Pull		30 388 kg (66,990 lb.)	
Hydraulics			
Open center, load sensing			
Main Pumps		3 variable-displacement axial-piston pumps	
Maximum Rated Flow		2 x 235 L/min (62.1 gpm) x 2      1 x 211 L/min (55.7 gpm) x 1	
Pilot Pump		One gear	
Maximum Rated Flow		36.4 L/min (9.6 gpm)	
Pressure Setting		3900 kPa (566 psi)	
System Operating Pressure			
Circuits			
Implement		34 300 kPa (4,975 psi)	
Travel		35 500 kPa (5,149 psi)	
Swing		32 400 kPa (4,699 psi)	
Power Boost		38 000 kPa (5,511 psi)	
Controls		Pilot levers, short-stroke, low-effort hydraulic pilot controls with shutoff lever	
Cylinders			
	Bore	Rod Diameter	Stroke
Boom (2)	135 mm (5.3 in.)	100 mm (3.9 in.)	1578 mm (62.1 in.)
Arm (1)	150 mm (5.9 in.)	105 mm (4.1 in.)	1659 mm (65.3 in.)
Bucket (1)	135 mm (5.3 in.)	90 mm (3.5 in.)	1070 mm (42.1 in.)
Electrical			
Voltage		24 volt	
Number of Batteries (12 volt)		2	
Battery Capacity		860 CCA	
Alternator Rating		50 amp	
Work Lights		3 Halogen (1 mounted on frame, 2 mounted on boom)	
Undercarriage			
Rollers (each side)			
Carrier		2	
Track		8	
Shoes, Triple Semi-Grousers (each side)		48	
Track			
Adjustment		Hydraulic	
Guides		3 per side	
Chain		Sealed and lubricated	
Ground Pressure			
Triple Semi-Grouser Shoes		800 mm (32 in.)	
800 mm (32 in.)		50 kPa (7.3 psi)	



Swing Mechanism		ZX345USLC-6
Swing Speed		10.5 rpm
Swing Torque		90 500 Nm (66,750 lb.-ft.)
Serviceability		
Refill Capacities		
Fuel Tank	380 L (100 gal.)	
Diesel Exhaust Fluid (DEF) Tank	16 L (4.2 gal.)	
Cooling System	41 L (10.8 gal.)	
Engine Oil with Filter	48 L (12.7 gal.)	
Hydraulic Tank	160 L (42 gal.)	
Hydraulic System	330 L (87 gal.)	
Swing Drive	12 L (3.2 gal.)	
Gearbox		
Propel (each)	11 L (2.9 gal.)	
Pump Drive	1.1 L (1.2 qt.)	
Operating Weights		
With full fuel tank; 79-kg (175 lb.) operator; 1.25-m <sup>3</sup> (1.63 cu. yd.), 1067-mm (42 in.), 957-kg (2,110 lb.) bucket; 3.76-m (12 ft. 4 in.) arm; 8680-kg (19,136 lb.) counterweight; 800-mm (32 in.) triple semi-grouser shoes		
SAE Operating Weight	35 700 kg (78,710 lb.)	
Component Weights		
Undercarriage w/Triple Semi-Grouser Shoes		
800-mm (32 in.)	12 710 kg (28,021 lb.)	
One-Piece Boom (with arm cylinder)	2385 kg (5,258 lb.)	
Arm with Bucket Cylinder and Linkage		
3.11 m (10 ft. 2 in.)	1494 kg (3,294 lb.)	
3.76 m (12 ft. 4 in.)	1583 kg (3,490 lb.)	
Cylinder (1), Total Weight		
Arm	348 kg (767 lb.)	
Bucket	211 kg (465 lb.)	
Boom-Lift Cylinders (2), Total Weight		
584 kg (1,287 lb.)		
Operating Dimensions		
ZX345USLC-6		
Arm Length	3.11 m (10 ft. 2 in.)	3.76 m (12 ft. 4 in.)
Arm Digging Force		
SAE	138 kN (31,020 lb.)	121 kN (27,200 lb.)
ISO	144 kN (32,370 lb.)	127 kN (28,550 lb.)
Bucket Digging Force		
SAE	175 kN (39,340 lb.)	175 kN (39,340 lb.)
ISO	202 kN (45,410 lb.)	202 kN (45,410 lb.)
A Maximum Reach	10.9 m (35 ft. 9 in.)	11.46 m (37 ft. 7 in.)
A' Maximum Reach at Ground Level	10.64 m (34 ft. 11 in.)	11.22 m (36 ft. 10 in.)
B Maximum Digging Depth	6.92 m (22 ft. 8 in.)	7.57 m (24 ft. 10 in.)
B' Maximum Digging Depth at 2.44-m (8 ft.) Flat Bottom	6.74 m (22 ft. 1 in.)	7.41 m (24 ft. 4 in.)
C Maximum Cutting Height	11.41 m (37 ft. 5 in.)	11.69 m (38 ft. 4 in.)
D Maximum Dumping Height	8.38 m (27 ft. 6 in.)	8.67 m (28 ft. 5 in.)
E Minimum Swing Radius	3.4 m (11 ft. 2 in.)	3.39 m (11 ft. 1 in.)
F Maximum Vertical Wall	6.14 m (20 ft. 2 in.)	6.71 m (22 ft.)

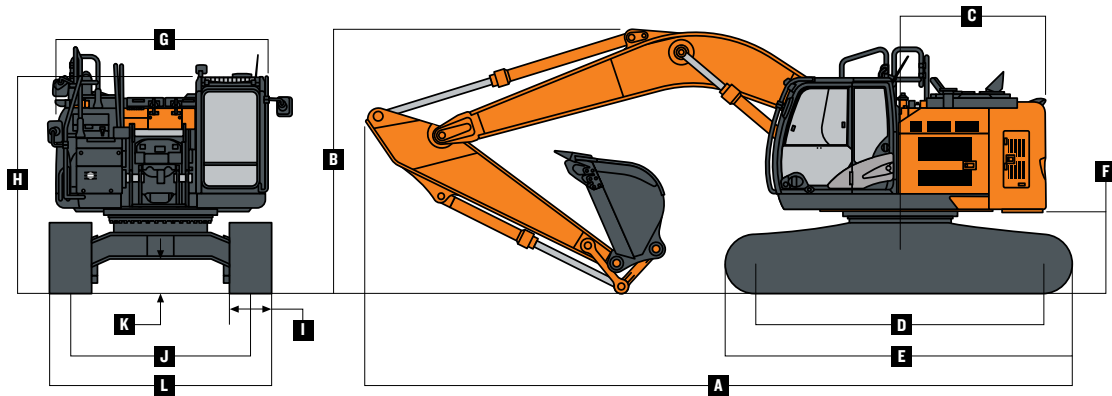




## SPECIFICATIONS

### ZX345USLC-6

Machine Dimensions		ZX345USLC-6
<b>A</b> Overall Length with Arm	3.11 m (10 ft. 2 in.)	9.96 m (32 ft. 8 in.)
	3.76 m (12 ft. 4 in.)	10.02 m (32 ft. 10 in.)
<b>B</b> Overall Height with Arm	3.11 m (10 ft. 2 in.)	3.35 m (11 ft.)
	3.76 m (12 ft. 4 in.)	3.42 m (11 ft. 3 in.)
<b>C</b> Rear-End Length/Swing Radius		2.09 m (6 ft. 10 in.)
<b>D</b> Distance Between Idler/Sprocket Centerline		4.05 m (13 ft. 3 in.)
<b>E</b> Undercarriage Length		4.94 m (16 ft. 2 in.)
<b>F</b> Counterweight Clearance		1.16 m (3 ft. 10 in.)
<b>G</b> Upperstructure Width		3.05 m (10 ft.)
<b>H</b> Cab Height		3.23 m (10 ft. 7 in.)
<b>I</b> Track Width with Triple Semi-Grouser Shoes		800 mm (32 in.)
<b>J</b> Gauge Width		2.59 m (8 ft. 6 in.)
<b>K</b> Ground Clearance		500 mm (20 in.)
<b>L</b> Overall Width		
Triple Semi-Grouser Shoes, 800 mm (32 in.)		3.39 m (11 ft. 1 in.)



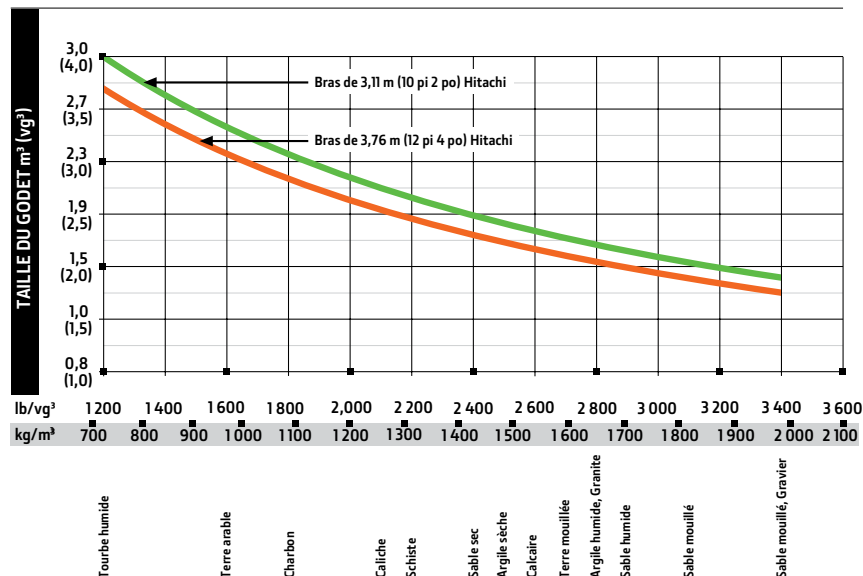
## Buckets

### ZX345USLC-6

A full line of buckets is offered to meet a wide variety of applications. Digging forces are with power boost. Buckets are equipped with ESCO teeth standard. Replaceable cutting edges and a variety of teeth are available through dealer parts. Optional side cutters add 150 mm (6 in.) to bucket widths. Capacities are SAE heaped ratings.

Type Bucket	Bucket Width		Bucket Capacity		Bucket Weight		Bucket Dig Force		Arm Dig Force 3.11 m (10 ft. 2 in.)		Arm Dig Force 3.76 m (12 ft. 4 in.)		ISO Bucket Tip Radius		Number of Teeth
	mm	in.	m³	cu. yd.	kg	lb.	kN	lb.	kN	lb.	kN	lb.	mm	in.	
Heavy Duty	914	36	1.23	0.9	1010	2,226	189.7	42,653	144.1	32,397	125.1	28,126	1661	65.4	4
	1067	42	1.52	1.2	1147	2,530	189.7	42,653	144.1	32,397	125.1	28,126	1661	65.4	5
	1219	48	1.81	1.4	1213	2,675	189.7	42,653	144.1	32,397	125.1	28,126	1661	65.4	5
	1372	54	2.09	1.6	1328	2,928	189.7	42,653	144.1	32,397	125.1	28,126	1661	65.4	6

## Bucket Selection Guide\*



\*Communiquez avec votre concessionnaire John Deere pour une sélection optimale de godets et d'accessoires. Ces recommandations sont faites en fonction d'une utilisation moyenne dans des conditions générales. Ne comprend pas les équipements en option tels que les pouces et les coupleurs. Il est possible d'utiliser des godets plus larges avec des matériaux légers, des travaux à olat et à niveau, des matériaux moins compactés et des applications de charoement comme l'excavation intensive dans des conditions idéales. Il est recommandé d'utiliser les petits godets



**Lift Charts**
**ZX345USLC-6**

**Boldface** type indicates hydraulically limited capacity; **lightface** type indicates stability-limited capacities, in kg (lb.). Machine equipped with 957-kg (2,110 lb.) bucket and standard counterweight; and situated on firm, level, uniform supporting surface. Total load includes weight of cables, hook, etc. Figures do not exceed 87 percent of hydraulic capacities or 75 percent of weight needed to tip machine. All lift capacities are based on ISO 10567 (with power boost).

Load Point Height	1.5 m (5 ft.)		3.0 m (10 ft.)		4.5 m (15 ft.)		6.0 m (20 ft.)		7.5 m (25 ft.)		9.0 m (30 ft.)	
Horizontal Distance from Centerline of Rotation	Over Front	Over Side	Over Front	Over Side	Over Front	Over Side	Over Front	Over Side	Over Front	Over Side	Over Front	Over Side
With 3.11-m (10 ft. 2 in.) arm, 6.2-m (20 ft. 4 in.) boom and 800-mm (32 in.) triple semi-grouser shoes												
7.5 m (25 ft.)							7050 (15,300)	7050 (15,300)	4850 (10,700)	4850 (10,700)		
6.0 m (20 ft.)							7950 (17,300)	7950 (17,300)	7100 (15,000)	5550 (11,900)		
4.5 m (15 ft.)					12 000 (25,650)	12 000 (25,650)	9250 (20,050)	7750 (16,750)	7900 (17,200)	5350 (11,500)	4350 (9,600)	3850 (8,500)
3.0 m (10 ft.)					15 250 (32,700)	11 400 (24,600)	10 800 (23,250)	7350 (15,800)	8650 (18,750)	5150 (11,050)	6250 (11,750)	3750 (8,050)
1.5 m (5 ft.)					14 200 (34,350)	10 700 (23,100)	11 950 (25,850)	6950 (15,000)	8750 (18,850)	4950 (10,600)	6550 (13,000)	3650 (7,850)
Ground Line					15 200 (35,500)	10 450 (22,500)	12 300 (26,400)	6750 (14,500)	8600 (18,500)	4800 (10,300)	5550 (11,900)	3600 (7,800)
-1.5 m (-5 ft.)			9950 (22,500)	9950 (22,500)	16 500 (35,750)	10 450 (22,450)	12 150 (26,200)	6650 (14,300)	8550 (18,350)	4750 (10,200)		
-3.0 m (-10 ft.)			16 350 (37,200)	16 350 (37,200)	14 500 (31,300)	10 550 (22,750)	10 850 (23,300)	6700 (14,450)	7850 (17,100)	4800 (10,300)		
-4.5 m (-15 ft.)			14 300 (30,550)	14 300 (30,550)	10 850 (23,100)	10 850 (23,100)	7650 (15,750)	6950 (15,050)				
With 3.76-m (12 ft. 4 in.) arm, 6.2-m (20 ft. 4 in.) boom and 800-mm (32 in.) triple semi-grouser shoes												
7.5 m (25 ft.)									4950 (10,350)	4950 (10,350)		
6.0 m (20 ft.)							6250 (13,650)	6250 (13,650)	5950 (12,800)	5650 (12,100)	3600 (7,800)	3600 (7,800)
4.5 m (15 ft.)					10 050 (21,000)	10 050 (21,000)	8400 (18,150)	7950 (17,100)	7300 (15,750)	5450 (11,700)	5200 (10,600)	3900 (8,350)
3.0 m (10 ft.)					13 800 (29,650)	11 750 (25,350)	10 000 (21,650)	7450 (16,100)	8150 (17,650)	5200 (11,150)	6500 (13,350)	3800 (8,100)
1.5 m (5 ft.)					16 400 (35,400)	10 900 (23,500)	11 450 (24,750)	7050 (15,150)	8800 (18,900)	4950 (10,650)	6550 (14,050)	3650 (7,850)
Ground Line			5600 (12,750)	5600 (12,750)	16 450 (37,600)	10 500 (22,550)	12 250 (26,400)	6750 (14,500)	8600 (18,450)	4800 (10,250)	6450 (13,850)	3550 (7,650)
-1.5 m (-5 ft.)	6300 (14,100)	6300 (14,100)	9300 (21,050)	9300 (21,050)	17 050 (36,900)	10 350 (22,250)	12 150 (26,050)	6600 (14,200)	8500 (18,250)	4700 (10,050)	5750 (11,900)	3500 (7,600)
-3.0 m (-10 ft.)	10 100 (22,650)	10 100 (22,650)	14 050 (31,850)	14 050 (31,850)	15 550 (33,650)	10 400 (22,400)	11 450 (24,750)	6600 (14,200)	8500 (18,300)	4700 (10,100)		
-4.5 m (-15 ft.)			17 650 (37,850)	17 650 (37,850)	12 700 (27,250)	10 650 (22,900)	9350 (19,800)	6750 (14,550)				



# ZX345USLC-6

Key: ● Standard ▲ Optional or special kit

345 Engine
● Auto-idle system
● Automatic belt-tension device
● Batteries (2 – 12 volt)
● Coolant recovery tank
● Dual-element dry-type air filter
● Electronic engine control
● Enclosed fan guard (conforms to SAE J1308)
● Engine coolant to –37 deg. C (–34 deg. F)
● Fuel filter with water separator
● Full-flow oil filter
● Turbocharger with charge air cooler
● 500-hour engine-oil-change interval
● 70% (35 deg.) off-level capability
● Programmable auto shutdown
● Cool-on-demand hydraulic-driven, suction-type fan with remote-mounted drive and enclosed fan guard
▲ Engine-oil-sampling valve
▲ Severe-duty fuel filter
Hydraulic System
● Reduced-drift valve for boom down, arm in
● Auxiliary hydraulic valve section
● Spring-applied, hydraulically released automatic swing brake
● Auxiliary hydraulic-flow adjustments through monitor
● Auto power lift
● 5,000-hour hydraulic-oil-change interval
● Auxiliary hydraulic lines with proportional control on right-hand pilot lever
▲ Hydraulic-oil-sampling valve
▲ Hydraulic filter restriction indicator kit
▲ Load-lowering control device
▲ Single-pedal propel control
▲ Control pattern change valve
Undercarriage
● Planetary drive with axial piston motors
● Propel motor shields
● Spring-applied, hydraulically released automatic propel brake
● Track guides, front idler and 3 additional
● 2-speed propel with automatic shift
● Upper carrier rollers (2)
● Sealed and lubricated track chain
▲ Triple semi-grouser shoes, 800 mm (32 in.)

345 Upperstructure
● Right-hand, left-hand and counterweight mirrors
● Vandal locks with ignition key: Cab door / Service doors / Toolbox
● Debris screening
● Service handrails
● Remote-mounted engine oil and fuel filters
Front Attachments
● Centralized lubrication system
● Dirt seals on all bucket pins
● Oil-impregnated bushings
● Reinforced resin thrust plates
● Tungsten-carbide-coating on arm-to-bucket joint
▲ Arm, 3.11 m (10 ft. 2 in.)
▲ Arm, 3.76 m (12 ft. 4 in.)
▲ Attachment quick-couplers
▲ Buckets: Ditching / Heavy duty / Heavy-duty high capacity / Side cutters and teeth
▲ Material clamps
Operator's Station
● Meets ISO 12117-2 for ROPS
● Adjustable independent-control positions (levers-to-seat, seat-to-pedals)
● AM/FM radio
● Auto climate control/air conditioner/heater/pressurizer
● Built-in Operator's Manual storage compartment and manual
● Cell-phone power outlet, 12 volt, 60 watt, 5 amp
● Coat hook
● Deluxe air-suspension heated cloth seat with 100-mm (4 in.) adjustable armrests
● Floor mat
● Front windshield wiper with intermittent speeds
● Gauges (illuminated): Diesel Exhaust Fluid (DEF) / Engine coolant / Fuel
● Horn, electric
● Hour meter, electric
● Hydraulic shutoff lever, all controls
● Hydraulic warm-up control
● Interior light
● Large cup holder
● Machine Information Center (MIC)
● Mode selectors (illuminated): Power modes (3) / Travel modes (2 with automatic shift) / Work mode (1)

345 Operator's Station (continued)
● Multifunction, color LCD monitor with: Diagnostic capability / Multiple-language capabilities / Maintenance tracking / Clock / System monitoring with alarm features: Auto-idle indicator, engine-air-cleaner-restriction indicator light, engine check, engine-coolant-temperature indicator light with audible alarm, engine-oil-pressure indicator light with audible alarm, low-alternator-charge indicator light, low-fuel indicator light, low DEF indication with audible alarm, fault-code-alert indicator, fuel-rate display, wiper-mode indicator, work-lights-on indicator and work-mode indicator
● Motion alarm with cancel switch (conforms to SAE J994)
● Power-boost switch on right console lever
● SAE 2-lever control pattern
● Tinted glass
● Transparent tinted overhead hatch
● Hot/cold beverage compartment
● Seat belt, 76 mm (3 in.), retractable
● Air-suspension heated seat
▲ Protection screens for cab front, rear, and side
▲ Window vandal-protection covers
Electrical
● 50-amp alternator
● Blade-type multi-fused circuits
● Positive-terminal battery covers
● ZXLink™ wireless communication system (available in specific countries; see your dealer for details)
● Battery disconnect switch
● Rearview camera
▲ Left and right side-view cameras with additional monitor
Lights
● Halogen (1 mounted on frame, 2 mounted on boom)
▲ 2 lights on front of cab; 1 rear cab light

See your Hitachi dealer for further information.

Net engine power is with standard equipment including air cleaner, exhaust system, alternator and cooling fan, at test conditions specified per ISO 9249. No derating is required up to 3050-m (10,000 ft.) altitude. Specifications and design subject to change without notice. Wherever applicable, specifications are in accordance with SAE standards. Except where otherwise noted, these specifications are based on a ZX345USLC-6 unit with full fuel tank; 79-kg (175 lb.) operator; 1.25-m<sup>3</sup> (1.63 cu. yd.), 1067-mm (42 in.), 957-kg (2,110 lb.) bucket; 3.76-m (12 ft. 4 in.) arm; 8680-kg (19,136 lb.) counterweight; 800-mm (32 in.) triple semi-grouser shoes.

# HITACHI